



Eesti HIV-positiivsete
Võrgustik



DID YOU KNOW THAT...



Queer Partnership in the Baltic States, 2025
Results of the Study by EHPV and the Peemot Center

56%

**LGBTIQ PEOPLE IN
THE BALTIC STATES**

LIVE WITHOUT A PARTNER



ARE IN A QUEER RELATIONSHIP

38% CISGENDER MEN

16%

IN A REGISTERED PARTNERSHIP

33% CISGENDER WOMEN

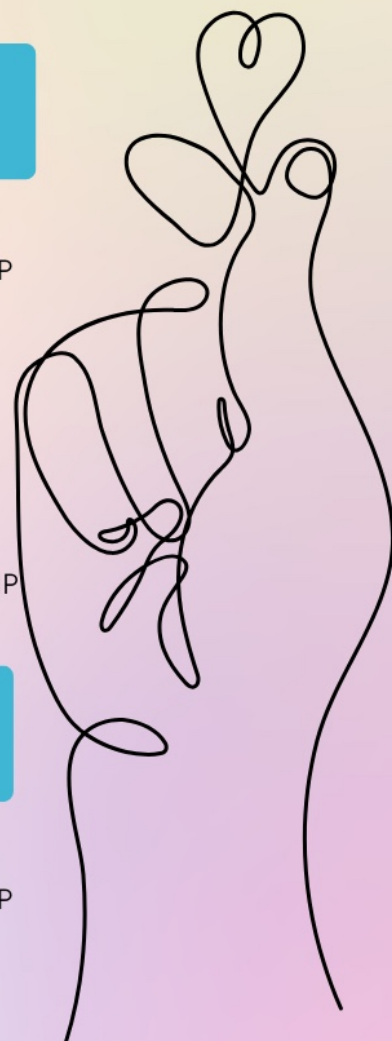
17%

IN A REGISTERED PARTNERSHIP

**37% TRANS AND NON-BINARY
PEOPLE**

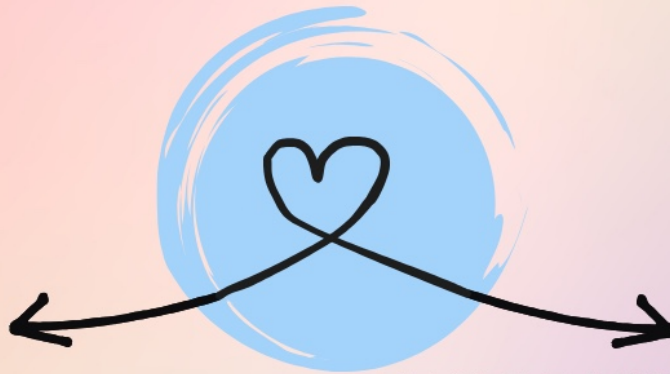
16%

IN A REGISTERED PARTNERSHIP



LGBTIQ PEOPLE IN QUEER RELATIONSHIPS

- ARE ON AVERAGE 5 YEARS OLDER THAN THOSE LIVING ALONE,
- MORE LIKELY TO HAVE HIGHER EDUCATION AND A HIGHER INCOME,
- MORE OFTEN HAVE CHILDREN AND SIGNIFICANTLY LESS OFTEN EXPERIENCE MOOD DISORDERS



PEOPLE LIVING IN A REGISTERED PARTNERSHIP

are about 5 years older than those who do not register their partnership.

PEOPLE LIVING IN AN UNREGISTERED PARTNERSHIP

are more often permanent residents of their country and are less likely to obtain higher education or have children.





87%

LGBTIQ PEOPLE DO NOT HAVE CHILDREN

Cisgender men express the intention to have children in the near future more often than cisgender women and trans or non-binary people

LGBTIQ respondents who plan to have children show significantly lower levels of depression and anxiety compared to those who do not plan to have children.



LGBTIQ PEOPLE HAVE EXPERIENCED
IN CONNECTION WITH THEIR SEXUAL ORIENTATION,
GENDER IDENTITY, OR SEXUAL BEHAVIOR

STIGMATIZATION

MOST COMMONLY IN THE FORM OF **INSULTS,**
GOSSIP, AND NEGATIVE REMARKS, BOTH WITHIN
THE FAMILY AND IN MEDICAL INSTITUTIONS.

Trans and non-binary LGBTIQ people
experience stigmatization more
frequently than cisgender people.

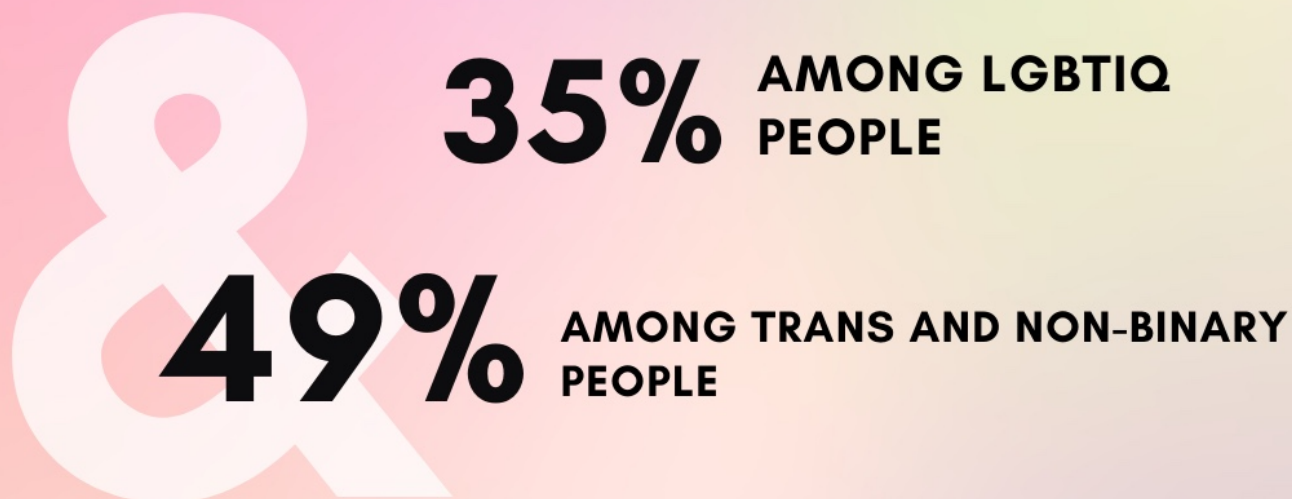
The worse their economic situation,
the more frequently LGBTIQ people
experience stigmatization.



"Kväärpäartnerlus Baltimaades", 2025
EHPV ja Peemoti keskuse uuringu tulemused



EXPERIENCE CLINICAL DEPRESSION



Depression is more common among younger people and those in worse economic situations than among older individuals and those with better financial standing.

Trans and non-binary people may exhibit moderate levels of internalized transphobia, which is associated with factors such as younger age, lower education level, loneliness, stigmatization, and symptoms of depression.

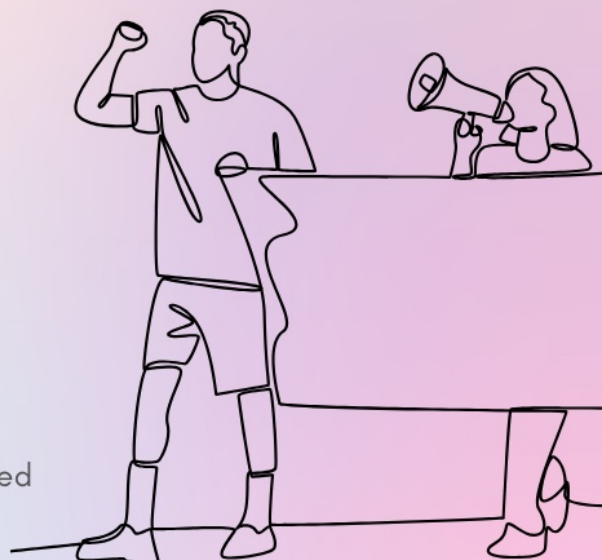


THE MOST POPULAR WAYS TO BE INVOLVED IN THE LGBTIQ COMMUNITY

IN 2025 WERE ONLINE ACTIVITY AND
PARTICIPATION IN PUBLIC EVENTS.

THE LEAST COMMON

*FORM OF INVOLVEMENT WAS INITIATING NEW LGBTIQ-
RELATED PROJECTS, WITH ONLY 10% OF WOMEN, 17% OF
MEN, AND 21% OF TRANS AND NON-BINARY
RESPONDENTS PARTICIPATING*



"Kväärpartnerlus Baltimaades", 2025
EHPV ja Peemoti keskuse uuringu tulemused



Eesti HIV-positiivsete
Võrgustik



LIVES IN ESTONIA

8600

**GAY, BISEXUAL, AND OTHER
CISGENDER MEN WHO HAVE SEX
WITH MEN**

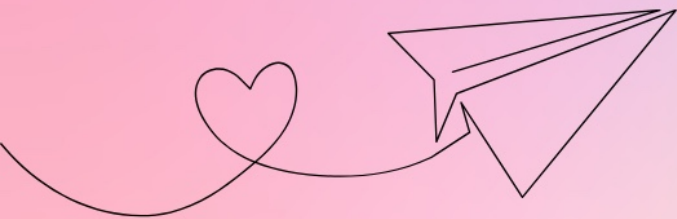
8700

**LESBIAN AND BISEXUAL
CISGENDER WOMEN**

1700

TRANS AND NON-BINARY PEOPLE





READ MORE

Full study text in Russian with a
summary in Estonian:



Eesti HIV-positiivsete
Võrgustik

